

- Mobile systems, RF SAW Filter
- Revision 0: March 2016

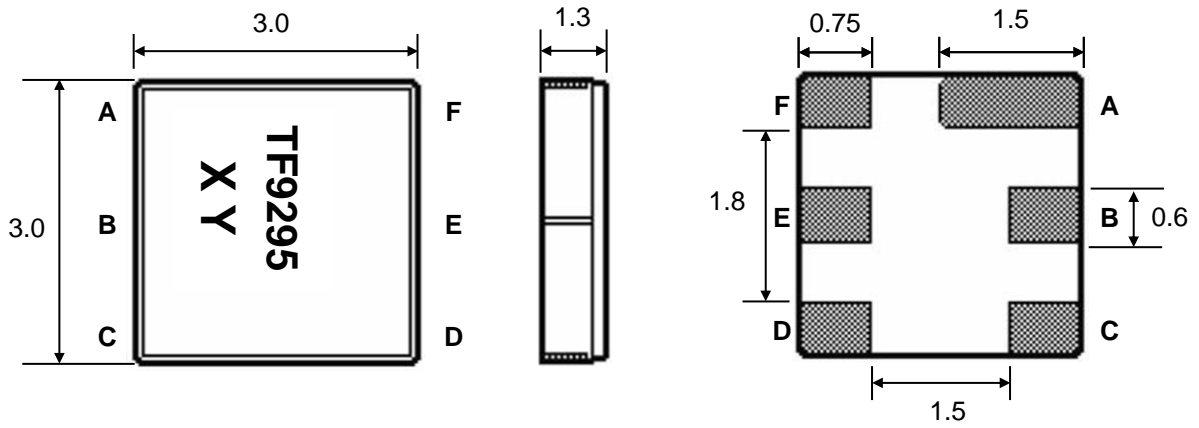
## Electrical Characteristics

MAXIMUM RATING				
PARAMETERS DESCRIPTION	UNIT	MINIMUM	TYPICAL	MAXIMUM
Operating Temperature Range	°C	-40	-	+85
Storage Temperature Range	°C	-40	-	+85
Maximum DC Voltage	V	-	-	6
Maximum Input Power	dBm	-	-	10
Source Impedance (single ended) <sup>(1)</sup>	Ω	-	50	-
Load Impedance (single ended) <sup>(1)</sup>	Ω	-	50	-
Package type & size	M			
Length x Width	mm <sup>2</sup>	-	3.0 x 3.0	-
Height	mm	-	-	1.3

ELECTRICAL SPECIFICATION				
PARAMETERS DESCRIPTION	UNIT	MINIMUM	TYPICAL	MAXIMUM
Center Frequency (Fo)	MHz	-	1842.5	-
Insertion Loss at Fo @ 1805.00 ~1880.00 MHz	dB	-	2.8	4.0
Amplitude Ripple @ 1805.00 ~1880.00 MHz	dB	-	1.0	2.5
Group Delay Ripple @ 1805.00 ~1880.00 MHz	ns	-	10	30
<b>Absolute Attenuation:</b>				
DC ~1720.00 MHz	dB	19	21	-
1720.00 ~1765.00 MHz	dB	25	30	-
1765.00 ~1785.00 MHz	dB	6	16	-
1920.00 ~1930.00 MHz	dB	15	38	-
1930.00 ~3120.00 MHz	dB	20	24	-
3120.00 ~4000.00 MHz	dB	17	30	-
Input VSWR @ 1805.00 ~1880.00 MHz			2.3:1	3.0:1
Output VSWR @ 1805.00 ~1880.00 MHz			2.3:1	3.0:1

**Notes :** (1) No matching network (Ref. Testing Environment Circuit as shown below)

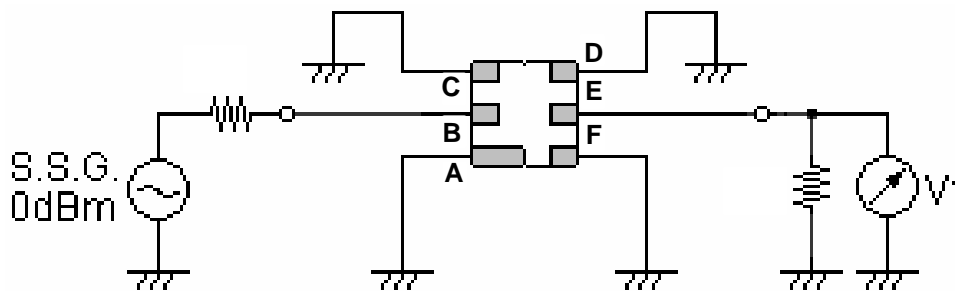
## Package Dimensions



Marking Descriptions	
TF	Transko Filter
9295	Series Number
X	Date Code (Year)
Y	Date Code (Month)

Pin Description	
A, C, D, F	Ground
E	Output
B	Input

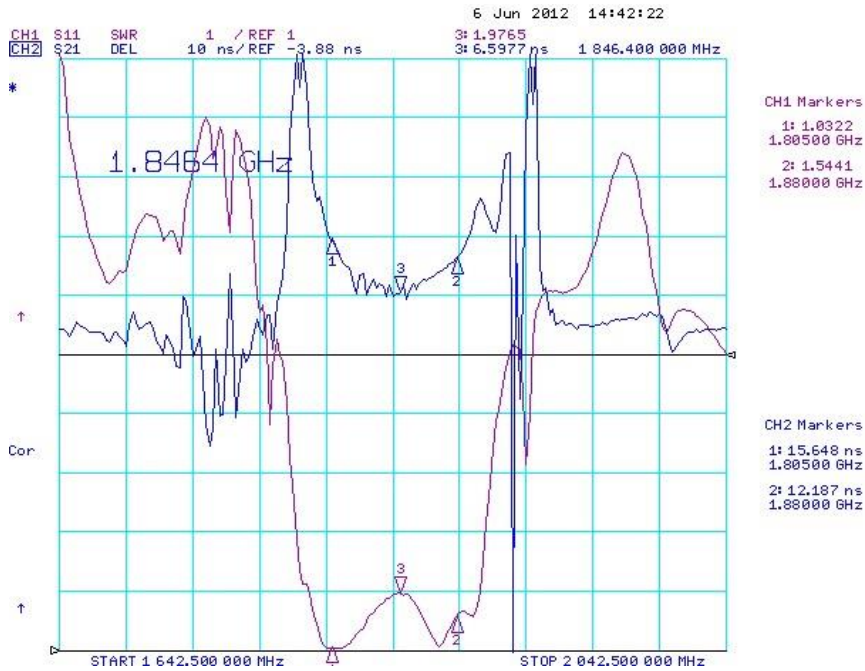
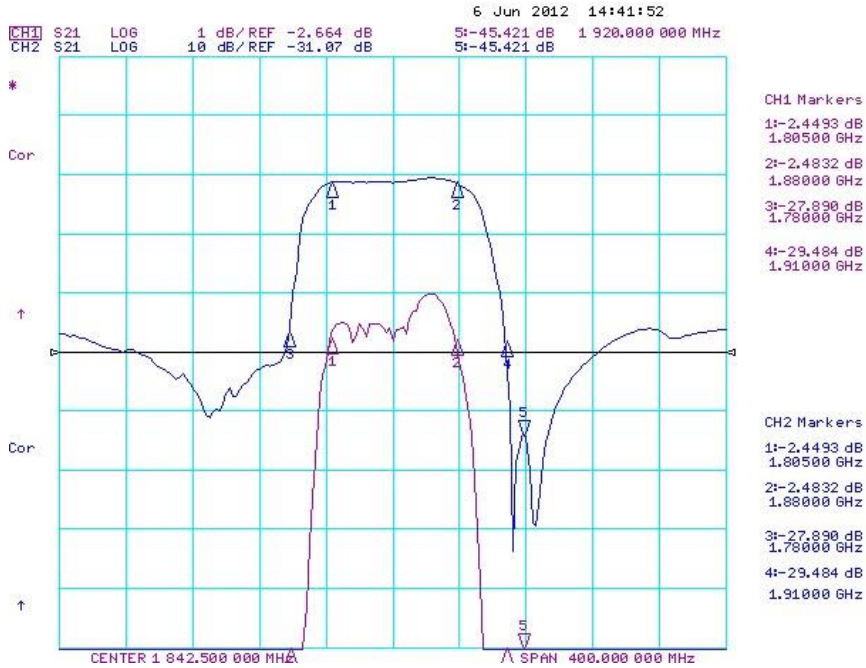
## Testing Environment



Source & Load Impedance: 50  $\Omega$

**Frequency Characteristics**

**Frequency Response**



## Frequency Response

